

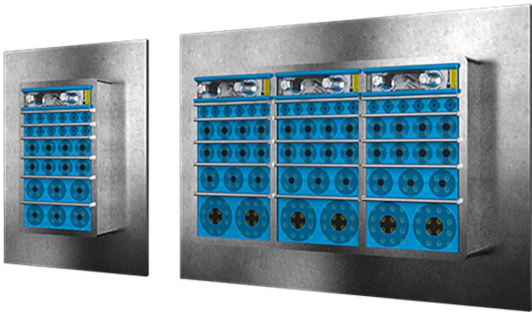


Roxtec SF welded Ex transit

Transit with metal frame for welding to enclosures.

The Roxtec SF W Ex is a high cable density transit rated for Ex e and Ex tb areas in temperatures from -60 to +80° C. The seal is for use with cables larger than 34,5mm in diameter. The transit frame has a flange to simplify welding to unprecise holes and is produced in 10mm thick metal.

- Provides built-in spare capacity



Product characteristics



Fire rated



IP/UL NEMA



Ex rated



EMI protection



Electrical safety

Structure of installation



Metal

Mounting type



Welding

Ratings & certificates

Fire

- A-CLASS according to IMO 2010 FTP Code
- H-CLASS according to IMO 2010 FTP Code + HC fire load curve

Tightness

- IP 66/67

Supports

- Bonding and grounding
- Electromagnetic shielding
- Potential equalization
- Ex rated

Frame dimensions

mm/kg

The frame variants below are a limited selection. For the full range of frames and configurations, please visit [roxtec.com](https://www.roxtec.com).

	Product	Frame openings	Packing space	External dimensions WxHxD	Aperture dimensions w x h	Weight	Art. no
	SF 6x1 W Ex PRIMED	1	120 x 180	260.5 x 358 x 60	200.5(+30/-30) x 298(+30/-30)	8.2	EXSF00600000112
	SF 6x2 W Ex PRIMED	2	120 x 180	391 x 358 x 60	331(+30/-30) x 298(+30/-30)	11.8	EXSF00600000212
	SF 6x3 W Ex PRIMED	3	120 x 180	521.5 x 358 x 60	461.5(+30/-30) x 298(+30/-30)	15.3	EXSF00600000312
	SF 6x1 W Ex AISI316	1	120 x 180	260.5 x 358 x 60	200.5(+30/-30) x 298(+30/-30)	8.1	EXSF00600000121
	SF 6x2 W Ex AISI316	2	120 x 180	391 x 358 x 60	331(+30/-30) x 298(+30/-30)	11.8	EXSF00600000221
	SF 6x3 W Ex AISI316	3	120 x 180	521.5 x 358 x 60	461.5(+30/-30) x 298(+30/-30)	15.3	EXSF00600000321



Sealing components

Sealing components

Accessories



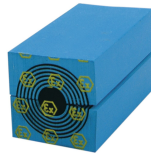
Lubricant



Wedge & Wedgekit Ex



RM Ex solid compensation module



RM Ex module with Multidiameter™



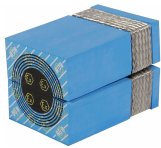
Wedge & Wedgekit ES Ex



Holder tools



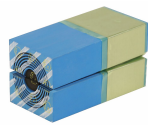
Welding tools



RM BG™ Ex module with Multidiameter™



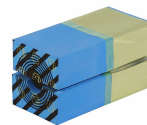
RM BG™ Ex solid compensation module



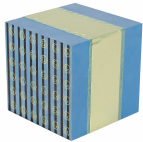
RM ES Ex module with Multidiameter™



RM ES Ex solid compensation module



RM PE Ex module with Multidiameter™



RM PE Ex solid compensation module



Ex sealing kit

For detailed information, please visit [roxtec.com](https://www.roxtec.com).

The product information provided by Roxtec does not release the purchaser of the Roxtec system, or part thereof, from the obligation to independently determine the suitability of the products for the intended process, installation and/or use.

Roxtec gives no guarantee for the Roxtec system or any part thereof and assumes no liability for any loss or damage whatsoever, whether direct, indirect, consequential, loss of profit or otherwise, occurred or caused by the Roxtec systems or installations containing components not manufactured by an authorized manufacturer and/or occurred or caused by the use of the Roxtec system in a manner or for an application other than for which the Roxtec system was designed or intended.

Roxtec expressly excludes any implied warranties of merchantability and fitness for a particular purpose and all other express or implied representations and warranties provided by statute or common law. User determines suitability of the Roxtec system for intended use and assumes all risk and liability in connection therewith. In no event shall Roxtec be liable for indirect, consequential, punitive, special, exemplary or incidental damages or losses.

The Roxtec products are offered and sold in accordance with the conditions of the Roxtec General Terms of Sales. The latest version of the Roxtec General Terms of Sales can be downloaded from <https://www.roxtec.com/en/about-us/about-roxtec/general-terms-of-sales/>

We reserve the right to make changes to the product and technical information without further notice. Any errors in print or entry are no claims for indemnity. The content of this publication is the property of Roxtec International AB and is protected by copyright.

This document was generated on: 2024-04-27